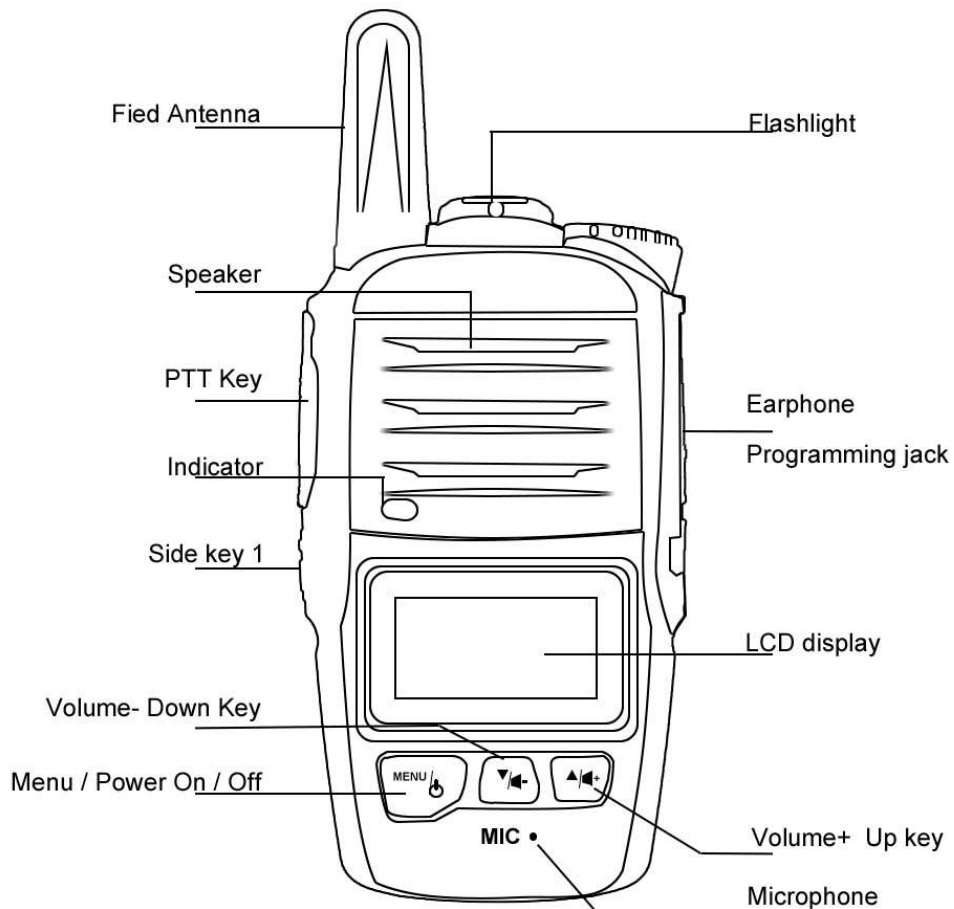


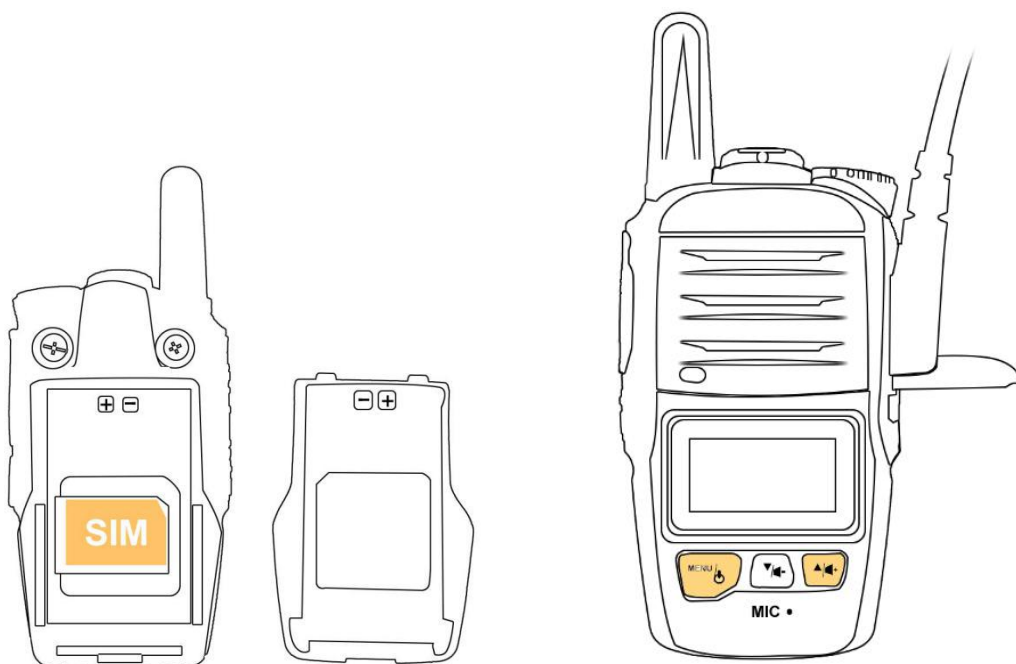
## 1.1 Get familiar to your Radio (same as for HD66 HD88 HD99)



## ■Get started

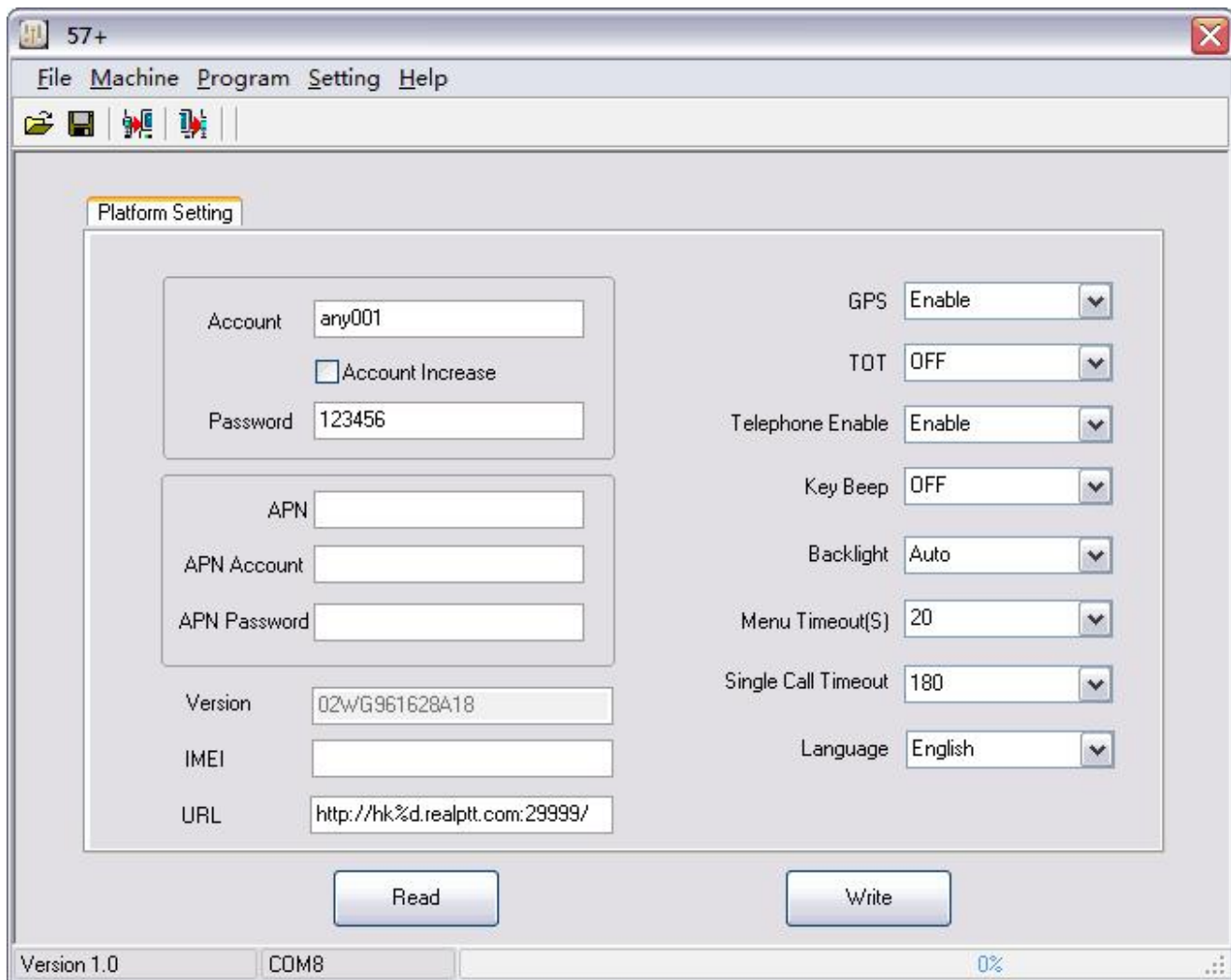
First of all, you have to prepare a sim card (standard size ) with data flow function activated for your network radio

1.1 **Install SIM CARD:** Take off the battery, insert the SIM card (as picture 2) , and cover the battery



1.2 **Program your RealPTT ID (there are yearly fee for account) account to the radio**

- ◆ Please Install USB driver depends on your PC system (such as WIN7 64bit)
- ◆ Connect radio with PC by USB cable as picture 3
- ◆ power on your radio with hold on press ▼ down key, then radio enter to program mode, and indicator green
- ◆ fulfill your RealPTT ID (refer to your radio agency) into the software, (for example account:any001; password:123456)



\*APN information may need depends on the SIM card server please call to get & program in, thanks

\*RealPTT ID and password and URL please refer to your RealPTT ID supplier or Radio supplier.

\*The right part of function set depends on users require to set.

After set done, press Write to write the data to your Radio, power off and unplug USB-K1 data cable

Now you can Restart your radio, You'll hear the voice hints "landing....." "any001 login successfully"

Congratulations, you can talk with your 3G users partner now.

## ■ Main features

### ◆ Talk Distance limitless if network coverage

HD88 is an GSM/WCDMA radio which use data flow for communicate, with data covered area, users can talk freely,national talk without distance limit.

### ◆ Unlimited Groups/Friends/Members

HD88 adopt realptt platform, Dealer management platform can create numerous groups, users, add users to same group to talk and set their right, level.

(p.s.: users id cost yearly fee)

**◆Single Call/Group Call/All Call**

Users can choose another users to talk or call their group , or call some of the users from recently group (User rights need to be set in the dealer management platform ).

**◆Adopt Realptt platform, free PC dispatcher**

HD88 use REALPTT platform, users can login PC dispatcher to make call, monitor users, remote kill/stun,active, send message.

**◆Radio/Smart phone/ PC linked system**

Users can download RealPTT apk to mobile phone and login in computer and write account to radio to make call or monitor.

(1 Realptt ID can login in only 1 terminal at the same time)

**◆GPS Location/ trajectory**

In the shutdown state, press SK1 and then turn on the radio with GPS function the indicator light is quickly flashing in red when searching the GPS position. The indicator light is green when GPS position searched successfully. The indicator light is red when GPS position searching failure.

Built in GPS function, on mobile phone or computer can watching users Real time GPS positioning and trajectory playback.

**◆Call Records**

The content of the call and message is kept in the server, and it is deleted regularly.

**◆Dispatch Monitor/Call/SMS**

Users can login PC dispatcher to make call, monitor users, remote kill/stun,active, send message.

**◆Key Beep on/off**

“landing” “please insert SIM card” “du~ du~” prompt on/off can set by PC depends on users prefer

**◆Time-out-Timer**

Timeout prohibition can set by PC program, preventing channel from being occupied

**◆PC programmable**

Users have to program ID in to radio to start use

**◆Program password protect**

Users can set password for program

**◆Remote Upgrade**

Upgrade software will provide for users self upgrade to latest version

Upgrade Mode: In the shutdown state, press SK1& SK2 power on Radio enter to upgrade mode. the indicator light is red.

| General specification |  |
|-----------------------|--|
| Frequency capability  | GSM(2g)900/1800MHz UMTS(3g/WCDMA)900/2100MHz(US Version)<br>GSM(2g)850/1900MHz UMTS(3g/WCDMA)850/1900MHz |
| Operate mode          | Same frequency simplex or different frequency simplex  |
| Battery capability    | 3600mAh standard   |
| Operate voltage       | DC4.2V   |
| Talk Platform         | REALPTT (SMART-PTT)  |
| SIM Type              | Standard sim card  |
| Operate temperature   | -20°C~ +50°  |

|                               |   |
|-------------------------------|---|
| Audio jack                    | Standard K1   |
| Dimension                     | 110*58*35mm   |
| Weight                        | 153g  |
| <b>Performance parameters</b> |   |
| Receive type                  | 56-Channel U-blox 7 engine<br>GPS/QZSS L1 C/A, GLONASS L1 FDMA<br>SBAS, WAAS, EGNOS, MSAS   |
| Transmit power                | GSM/GPRS power class: EGSM900: 4 (2W) DCS1800: 1 (1W)<br>EDGE power class: EGSM 900: E2 (0.5W) DCS1800: E1 (0.4W)<br>CDMA 1X power class: 3 (0.25W)<br>UMTS power class: WCDMA :3 (0.25W) EVDO: 3 (0.25W) |
| Audio Output Power            | Distortion <10%   |
| Receiving sensitivity         | -106dBm   |
| Max transmit power            | 23-26dBm  |
| GPS                           | Built in  |

### ◆ Troubleshooting

| No. | Problem                         | Causes and Solutions   |
|-----|---------------------------------|--|
| 1   | <b>Insert Sim card properly</b> | 1. SIM card not insert<br>2. SIM card data not on<br>3. SIM card slot have dust or break   |
| 2   | <b>Network failed</b>           | 1. check the account write correctly; 2. Please check URL correctly;<br>3. Please check if APN are required;<br>4. Please check antenna installed correctly<br>5. Please check SIM Card data is on<br>6. Please make sure account is valid; 7. Server problem refer to real-ptt provider |