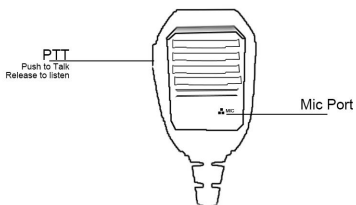
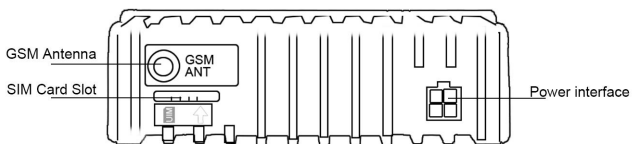
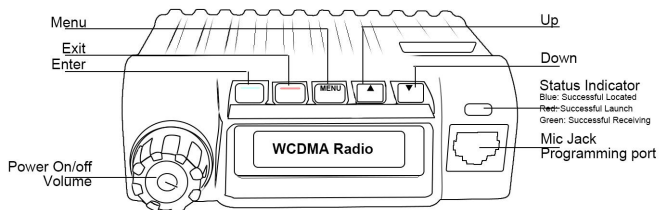


WCDMA/GSM Mobile radio instructions

■ Get familiar to your Radio



■ Advanced Key function

member choose: double click "menu" to choose users

■ **Backlight setting:** (standby mode click menu 7 times)

OFF	Backlight keeping off
Auto	Auto on when receiving or transmitting, no operating Of in 20s
ON	Backlight keeping on

■ **Rotate the screen:** (standby mode click MENU 8 times)

Normal	Screen Display regularity
	Screen Display Inversion

■ **Display language switch** (standby mode click MENU 9 times)

English/ Simple Chinses/Traditional Chinese

■ **Get started Of RealPTT system**

First of all, you have to prepare a sim card (standard size) with data flow function activated for your network radio.

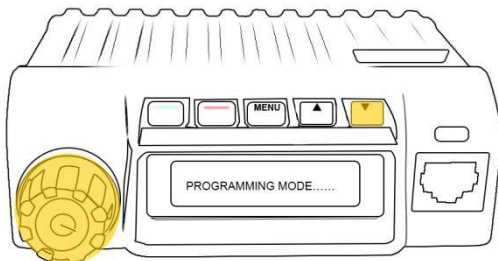
Install SIM CARD: insert SIM card to Sim card Slot

1.1 **Program your RealPTT ID** (there are yearly fee for account) account to the radio

◆ Please Install USB driver depends on your PC system (such as WIN7 64bit or 32bit)

◆ Connect USB cable (optional accessories) to Mic Jack

◆ power on your radio with hold on press ▼ down key, then radio enter to program mode, and indicator green



◆ fulfill your RealPTT ID (refer to your radio agency) into the software, (for example account:any001; password:123456)

***APN information** may need depends on the SIM card server please call to get & program in, thanks

***RealPTT ID and password and URL** please refer to your RealPTT ID supplier or Radio supplier.

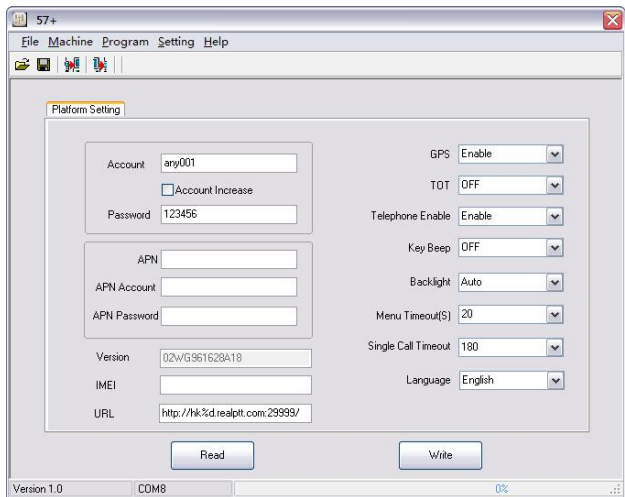
*The right part of function set depends on users require to set.

After set done, press “Write” to write the data to your Radio, power off and unplug USB data cable

Now you can Restart your radio, You'll hear the voice hints “landing.....”

“any001 login successfully”

Congratulations, you can talk with your 3G users partner now.



■Main features

◆Talk Distance limitless if network coverage

◆Unlimited Groups/Friends/Members, free PC dispatcher

3G-W1 adopt realptt platform, Dealer management platform can create numerous groups, users, add users to same group to talk and set their right, users can login PC dispatcher to make call, monitor users, remote kill/stun,active, send message.

◆Single Call/Group Call/All Call

Users can choose another users to talk or call their group , or call some of the users from recently group

(User rights need to be set in the dealer management platform).

◆Radio/Smart phone/ PC linked system

Users can download RealPTT apk to mobile phone and login in computer RealPTT software and write account to radio to make call or monitor.

(1 Realptt ID can login in only 1 terminal at the same time)

◆GPS Location/ trajectory

Built in GPS function, on mobile phone or computer can watching users Real time GPS positioning and trajectory playback.

◆Call Records

The content of the call and message is kept in the server, and it is deleted regularly.

◆Key Beep on/off

“landing”“please insert SIM card” “du~ du~”prompt on/off can set by PC depends on users prefer

◆Time-out-Timer

Timeout prohibition can set by PC program, preventing channel from being occupied

◆Program password protect

Users can set password for program, Read /write require password.

General specification	
Frequency capability	GSM(2g)900/1800MHz UMTS(3g/WCDMA)900/2100MHz
	GSM(2g)850/1900MHz UMTS(3g/WCDMA)850/1900MHz
Operate mode	Same frequency simplex or different frequency simplex
Operate voltage	DC12V
Talk Platform	REALPTT (SMART-PTT)
SIM Type	Standard sim card
Operate temperature	-20°C~~ +50°
Audio jack	Standard K1
Dimension	120*95*38mm
Weight	280g

Performance parameters	
Receive type	56-Channel U-blox 7 engine
	GPS/QZSS L1 C/A, GLONASS L1 FDMA
	SBAS, WAAS, EGNOS, MSAS
Transmit power	GSM/GPRS power class: EGSM900: 4 (2W) DCS1800: 1 (1W)
	EDGE power class: EGSM 900: E2 (0.5W) DCS1800: E1 (0.4W)
	CDMA 1X power class: 3 (0.25W)
	UMTS power class: WCDMA :3 (0.25W) EVDO: 3 (0.25W)
Audio Output Power	Distortion <10%
Receiving sensitivity	-106dBm
Max transmit power	23-26dBm
GPS	Built in

◆ Troubleshooting

Problem	Causes and Solutions
Insert Sim card properly	1. SIM card not insert 2. SIM card data not on 3. SIM card slot have dust or break
Network failed	1. check the account write correctly; 2. Please check URL correctly; 3. Please check if APN are required; 4. Please check antenna installed correctly 5. Please check SIM Card data is on 6. Please make sure account is valid; 7. Server problem refer to real-ptt provider